

An Invitation from the GLOBAL REPORTING INITIATIVE (GRI) to become an ORGANISATIONAL STAKEHOLDER (OS)

GRI develops globally applicable *Sustainability Reporting Guidelines*. These *Guidelines* are for voluntary use by any organisation that wishes to publicly report on the economic, environmental and social dimensions of their performance. GRI's goal is to advance transparency by elevating sustainability reporting to the level of consistency and comparability of financial reporting.

GRI is an inclusive, multi-stakeholder process that encourages the active participation of representatives from business, accountancy, investment, environmental, human rights, research and labour organisations from around the world in all of our activities – from the development of reporting standards to the way the organisation is governed. GRI offers a neutral forum where issues relevant to sustainability reporting are identified, discussed and prioritised. GRI works closely with other global initiatives thereby ensuring appropriate linkages and synergies between the *Guidelines* and other tools. GRI is an official collaborating centre of the United Nations Environment Programme (UNEP) and works in cooperation with UN Secretary-General's Global Compact.

All GRI products are developed through a global multi-stakeholder process. The core GRI product – the *Sustainability Reporting Guidelines* – are complemented by additional guidance outlined in sector supplements, technical protocols and resource documents. These additional tools are also developed through a multi-stakeholder process and are undertaken on a project basis in partnership with interested stakeholders. The portfolio of GRI products are freely available at www.globalreporting.org.

GRI invites you to become an OS and thereby support the continuous improvement of the GRI *Sustainability Reporting Guidelines*. Your support as an OS will ensure the multi-stakeholder nature of GRI which is vital to the credibility of the *Guidelines*. OS members are eligible to participate directly in GRI's uniquely diverse Stakeholder Council which shapes GRI policy and assists in the selection of members of the GRI Board of Directors. Apart from recognition as a leader in the advancement of sustainability performance measurement, membership also offers your organisation the use of a special GRI OS logo and a number of other benefits as outlined below.

GRI is based on your active involvement, your appreciation of the value of GRI's unique process and products, and your demand for continuous improvement of the GRI. We look forward to your continued support as an OS.

ORGANISATIONAL STAKEHOLDERS

Organisational Stakeholders (OS), contribute to the core work of GRI through the payment of a modest annual membership fee. Membership is valid for one year and OS will be contacted by GRI each year to renew this membership. Any organisation may register as an OS.

OS membership brings a number of benefits with it including:

Participation in GRI's Multi-Stakeholder, Global Network:

- OS will receive first notification on how to work closely with GRI on key product and network development activities.

- Receipt of a specialised OS bulletin in addition to a GRI electronic monthly update.
- Reduced fees for GRI events and publications.
- GRI will match OS that issue sustainability reports with leading universities who will provide detailed feedback on their reports (www.globalreporting.org/matchmaker)
- Automatic membership in the GRI National Forum in your country (details under development and will be posted on www.globalreporting.org).

GRI Governance Rights:

- Eligibility to become a GRI Stakeholder Council member. OS form the pool of candidates from which future GRI Stakeholder Council members will be selected.
- Voting rights to elect GRI Stakeholder Council members and, through the Stakeholder Council, the GRI Board of Directors.

GRI Recognition and Promotion:

- The use of a special GRI OS logo for your organisation's promotional purposes (see below).
- An individualised page on the GRI website outlining your support of and involvement in the GRI with a hyperlink to your organisation's webpage.
- GRI will feature names and logos of OS on banners and posters for display at international events and at its headquarters in Amsterdam.

OS commit to the following:

- Active promotion of GRI's mission within your organisation and broader stakeholder constituency.
- Participation in the GRI process – both governance and ad-hoc activities.
- Preparation of a publicly-available sustainability report, informed by the GRI *Guidelines*, as soon as feasible for your organisation.
- Payment of an annual OS membership fee.

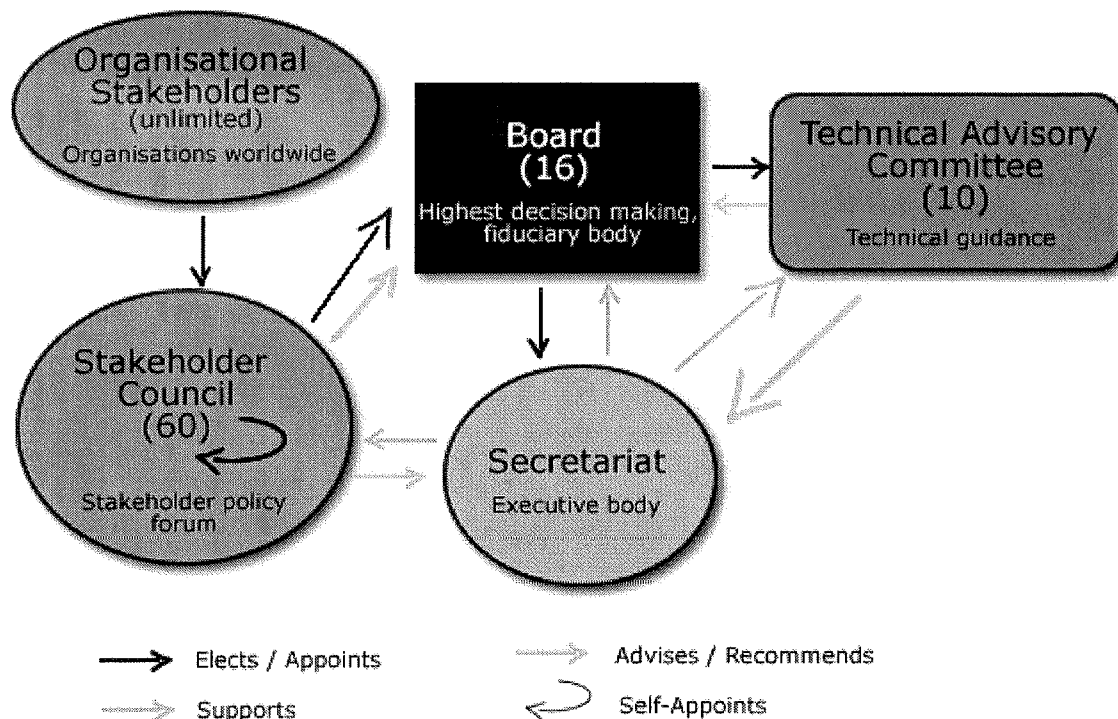
OS Annual Membership Fees

YOUR ANNUAL TURNOVER (In millions of €)	GRI OS ANNUAL MEMBERSHIP FEE (in €)
> 1,000	10,000
100 – 1,000	5,000
1 – 99	500
< 1	100

To join the OS programme, please register on-line at www.globalreporting.org
If you have any questions, please contact us at os@globalreporting.org

GRIs GOVERNANCE STRUCTURE

GRI's core principles are inclusiveness, balance and transparency. These principles are embedded in both its governance and operations, and underpin the legitimacy of the GRI process and products among stakeholders around the world. Organisational Stakeholders - comprising organisations of any type, size and location - are a critical element in GRI's governance structure and the foundation for sustaining the GRI as an open, democratic and global institution.



The members of the GRI Stakeholder Council can be found at www.globalreporting.org. The members of the GRI Board of Directors are:

- **Judy Henderson** (Australia) -- **Chair of GRI Board of Directors**; Chair, Centre for Australian Ethical Research
- **Roger Adams** (United Kingdom) -- Executive Director-Technical, Association of Chartered Certified Accountants
- **Jacqueline Aloisi de Lardere** (International) -- former Assistant Executive Director, United Nations Environment Programme, Division of Technology, Industry, and Economics
- **John Evans** (France) -- General Secretary of the Trade Union Advisory Committee of the OECD (TUAC)
- **Toshihiko Goto** (Japan) -- Chair, Environmental Auditing Research Group
- **Hanns Michael Hölz** (Germany) -- Global Head of Corporate Citizenship & Sustainable Development, Deutsche Bank AG
- **Jamshed J. Irani** (India) -- Director, Tata Sons Limited
- **Robert Kinloch Massie** (United States) -- former Executive Director, Coalition for Environmentally Responsible Economies
- **Ernst Ligteringen** (International) -- Chief Executive of the GRI and a member of the Board
- **Lindiwe Mokate** (South Africa) -- Chief Executive Officer of the South African Human Rights Commission
- **Mark Moody-Stuart** (United Kingdom) -- Chairman, Anglo American plc
- **Barbara Shailor** (United States) -- Director, International Affairs, American Federation of Labor-Congress of Industrial Organisations
- **Bjorn Stigson** (International) -- President, World Business Council for Sustainable Development
- **Peter H.Y. Wong** (China) -- Consultant, Deloitte Touche Tohmatsu, Hong Kong
- **Ricardo Young da Silva** (Brazil) -- President of the Board of Directors of Ethos Institute

ORGANISATIONAL STAKEHOLDER LOGO POLICY



As a registered GRI Organisational Stakeholder (OS), you may use the OS logo (see above) for promotional purposes in print, electronic and web media. This label will be updated every year and will be available upon renewing your OS membership. OS are encouraged to use the OS logo in a manner which reflects the spirit of your relationship with and commitment to GRI. This logo can be used for promotional purposes provided that such use does not give the false impression that GRI endorses, approves or certifies your sustainability report, annual report or any product or service that you may provide.

GRI encourages the use of the following statement when using the OS logo: "We are a registered Organisational Stakeholder of the Global Reporting Initiative (GRI) and support the mission of the GRI to develop globally accepted sustainability reporting guidelines through a global, multi-stakeholder process."

GRI would like to emphasize the following:

- GRI is not an auditor, assessor, certifier, or verifier of sustainability reports. Therefore, the OS logo cannot be used to indicate a 'stamp of approval' of a sustainability report.
- GRI reserves the right to take appropriate action when the OS logo is used without its permission or if it is adapted, modified or otherwise used inappropriately.

Donations to the GRI, established as a non-profit foundation ("Stichting") in The Netherlands may be tax deductible. Contributions may be made to GRI at ING Bank, Amstelplein 1, 1096 HA Amsterdam, The Netherlands, Account No. 67.49.67.828, Swift code INGBNL2A IBAN # NL70 INGB 0674 9678 28.

**To join the OS programme, please register on-line at www.globalreporting.org
If you have any questions, please contact us at os@globalreporting.org**



ORGANISATIONAL STAKEHOLDER REGISTRATION DETAILS

**PLEASE COMPLETE THIS REGISTRATION SECTION AND FAX TO GRI AT
+31.20.531.0031 OR E-MAIL TO OS@GLOBALREPORTING.ORG.**

**YOU CAN ALSO REGISTER ON-LINE AT
www.globalreporting.org/governance/OS/registration/OSregistration.asp**

Name of Organisation			
Address			
Country			
Contact name			
Title			
Email			
Phone			
Fax			
GRI News Updates	Html-Format:	Text-Format:	I have already subscribed:
Second contact name			
Title			
Email			
Phone			
Fax			
GRI News Updates	Html-Format:	Text-Format:	I have already subscribed:
Web URL			
Date of Registration			

My organisation belongs in the following stakeholder category:

- ☐ Business (e.g. companies of all sizes and associations that represent business interests)
- ☐ Civil Society Advocacy Organisation (e.g. non-profit, advocacy)
- ☐ Labour
- ☐ Mediating Institution (e.g. consultants, accountancy firms, research/academic organisations, investors, rating agencies, pension funds, standard setting bodies, media)

By registering as a GRI Organisational Stakeholder we agree to:

- ☐ Use the GRI OS Logo as outlined in the GRI OS Logo policy posted on the GRI website.
- ☐ Preparation of a publicly-available sustainability report, informed by the GRI *Guidelines*, as soon as feasible for your organisation.

My organisation learned about the GRI Organisational Stakeholder Programme:

- | | |
|--|--|
| <input type="checkbox"/> At a Conference/Seminar/Meeting | <input type="checkbox"/> From someone involved in GRI Governance |
| <input type="checkbox"/> At a GRI event | <input type="checkbox"/> OS invitation letter |
| <input type="checkbox"/> On the GRI Website | <input type="checkbox"/> Other: _____ |
| <input type="checkbox"/> From an existing GRI OS | |

67 INOVAÇÕES

1) INDICADORES + SÓLIDOS

2) JOGO COMPLETO DE PROTOCOLOS TÉCNICOS

3) FILTRO DE RELEVÂNCIA

4) HARD MONITORING (COM NORMAS

SEMI-ALIC - SABOCO - NORMAS GERAIS

- ISO - PROTOCOLOS INTERNAC - 6 COM PACT ETC)

5) QUATRO NÍVEIS

6) REGISTRO RETOMAR

7) UTILIDADE P/ SETOR FINANCEIRO

TAXIONOMIA FINANC - CLASSIF MOTOROL FIN.

8) FORMATO DIGITAL

ORGAN. STAKEH

NORM. NATURA
ETHOS

NEL + ALINE
AGUA (GRI)

FEEDBACK GROUP = AINDA

HÁ? PARTICIPAMOS?

2007
ALERTA

REALTIME
REPORTING

LTIMESTEP | QUARTER
?

NOSSO RELATÓRIO
É AUTOREFERENTE
COMPATILIZ COM DADOS
INDUSTRIAL CNI E
MACRO